

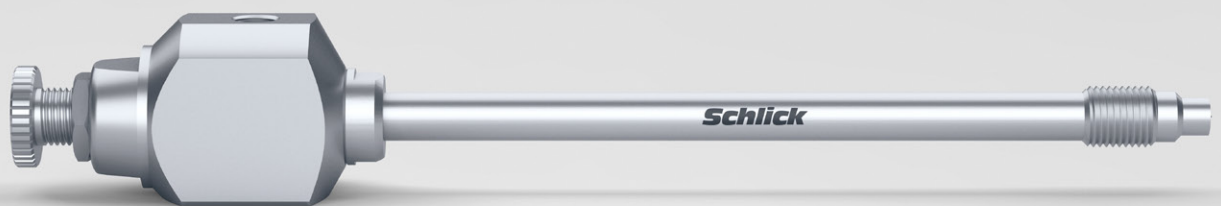
Living for Solutions:  
Dosing systems without dripping or idling.



## Distinctive.

SCHLICK dosing systems have been specially developed for installation in spray systems with pulsed operation. They enable precise dosing without any dripping or idling whatsoever. Industry sectors where substances need to be physically modified with precision regularly use these systems.

The quantity to be added is regulated via the bore of pressure-controlled nozzles and the available liquid differential pressure. In depressurised conditions, the dosing system is sealed via spring tension.



Model 1055



Model 1056

The opening pressure depends on the spring tension, which can be defined by the manufacturer according to customer requirements, or adjusted in individual model variants via an adjusting screw. In nozzle models with pneumatic open/close control, the extremely precise opening and closing times are controlled pneumatically. Cleaning needles can be used, depending on the model variant.

## High flexibility thanks to individual adjustment

The 1055 model features lateral liquid supply, which enables continuous adjustment of the opening pressure (up to max. 6 bar) thanks to its specially designed adjusting screw. This means that the flow can be individually adjusted and controlled. The valves are opened and closed by raising or lowering the liquid pressure. The closing pressure is about 0.5 – 1 bar below the opening pressure. Simple assembly/disassembly for cleaning or servicing by hand. Manufactured in stainless steel 1.4404, acid-resistant stainless steel 1.4571 or brass.

Bores of up to max 3.0 mm are available. Flow rate is subject to the bore diameter, pressure and media properties.



## Powerful even with highly viscous media

Thanks to its straight, centric liquid supply, the 1056 model is particularly well suited to atomising highly viscous liquids or media with a high solid content. The standard performance ranges from 0 – 5 l/min at a nominal pressure of 3 bar. The construction is not only extremely stable, but is also low-maintenance due to its sophisticated construction. The pressure spring responsible for opening and closing the liquid supply can be designed to handle pressure of up to 9 bar. This means it can be used for a wider range of media. Manufactured in stainless steel 1.4404, acid-resistant stainless steel 1.4571 or brass.

Bores of up to max 3.0 mm are available. Flow rate is subject to the bore diameter, pressure and media properties.



## The benefits at a glance

### Precise.

Precise and reproducible dosing of very small quantities.

### Safe.

Entirely free from dripping or idling during use.

### Straightforward.

Hassle-free and easy assembly/disassembly and cleaning.

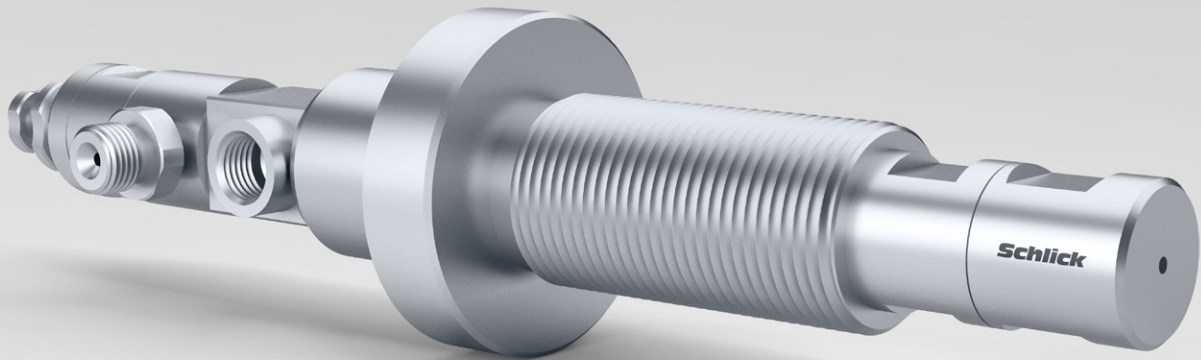
### Customised.

Specific designs for all sectors/applications.

### Original.

Consultation, engineering, production and testing from SCHLICK.





Precision-machined design with a cleaning needle for reliable dosing processes, even for media susceptible to blockages.

## Special and custom versions.

Many of our customers demand custom solutions and bespoke modifications, which can only be achieved through close consultation with expert advisers and engineers. Whatever the requirements, be it an individual system attachment or a process-specific design, SCHLICK can help. Our customers rightly trust in our expertise. With our fast and flexible approach, we will work to find a solution that meets your precise requirements and develop innovative technologies to realise your goals. All in line with our motto: Your application – our solution.



Customised design with large bore diameter for highly viscous media.

## Customised.

‘Living for Solutions’ is our motivation. Our solution-oriented approach is based on ongoing research and product optimisation, as well as the constant development of new techniques and procedures. This is the only sustainable way to meet individual customer requirements to a high standard.

Constant and close contact with the customer, from their initial enquiry right through to product renewal, is fundamental to our business model. It ensures we can supply our customers with the very best solutions exactly when they need them. This applies for both standard and custom solutions.



SCHLICK conversion kit with model 629



Supply unit with separate on/off control

# High precision.

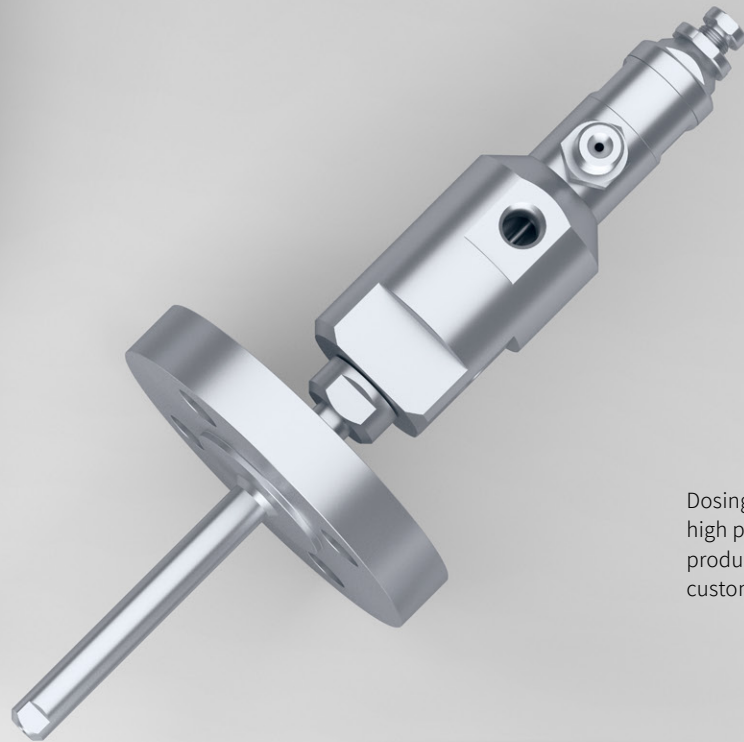
SCHLICK always tries to find the best solution for the customer. Alongside our experienced employees, the unique SCHLICK Test & Research Center forms an essential building block in this process. Here, recognised experts use their knowledge to perfect the very latest in measurement technology. The high-tech lab is used by companies from all industries to find solutions to a wide range of issues under practical conditions.



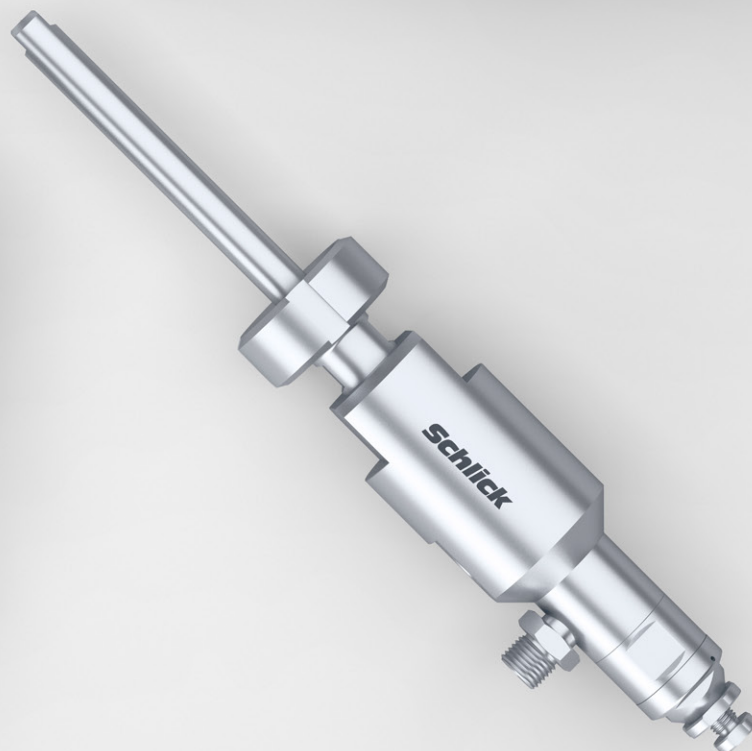
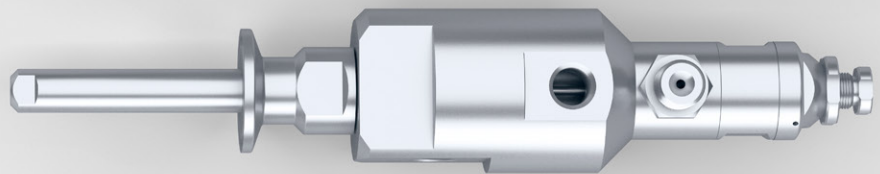
Total length: 2205 mm

Supply unit with individual (flange) bracket





Dosing systems with high pressure seals produced according to customer requirements.



Design with heatable supply  
and return system



## Living for Solutions.

We are one of the world's leading experts in atomisation technology, with a vast wealth of experience, impressive problem-solving abilities, and a high level of manufacturing expertise.

# Transforming ideas into reality.

Our approach is based on two key pillars: a high level of vertical integration and extensive experience in the development and optimisation of spray technology systems. More than 90,000 designs and solutions are testament to our success. In fact, examples of our solutions can be found in almost every industry. All have been subject to rigorous functional and reliability testing at the SCHLICK Test & Research Center prior to commissioning, as reliability is key if you want to keep modern manufacturing processes running smoothly.

Dosing system with  
double-acting piston for  
open/close control



Your application. Our nozzle.  
Our promise: Living for solutions.

**Consultation, engineering, production and testing.**

At SCHLICK, you get everything from one source.

The ideal solution for your application.

**Phone** +49 9565 9481-0

**Mail** [info@myschlick.com](mailto:info@myschlick.com)

Subject to technical alterations . 09.2022



Düsen-Schlick GmbH  
Hutstraße 4  
96253 Untersiemau/Coburg  
Germany  
Tel.: +49 9565 9481-0

[www.myschlick.com](http://www.myschlick.com)  
[info@myschlick.com](mailto:info@myschlick.com)